



Tree Grapple Installation Instructions



1300 East 3rd Street, Coffeyville Kansas 67337
Phone: (620) 251-8500
www.treeshear.com

**ATTENTION:
PLEASE READ ENTIRE
INSTALLATION
INSTRUCTIONS
BEFORE ATTEMPTING
TO INSTALL
TREE GRAPPLE**

This tree grapple is designed for use with the HYDRA CLIP 16" tree shear only. Using this tree grapple on any other piece of equipment will void the warranty provided with the tree grapple.

Note: Some level of welding skill is required to install this tree grapple. There are four (4) grapple mounting brackets that will have to be welded to your HYDRA CLIP tree shear. If you do not feel comfortable welding these brackets on your HYDRA CLIP please have your local weld shop do the job for you.

Please follow the following instructions carefully for a correct and complete installation of your Tree Grapple.

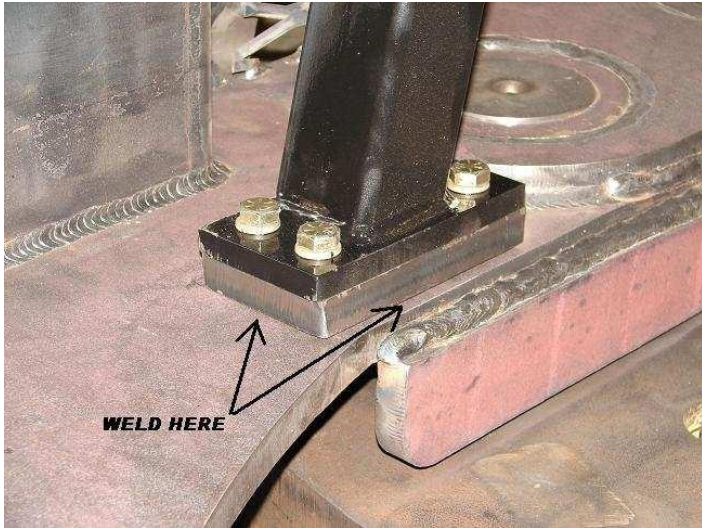
Step 1

Using a forklift, loader or hoist, position your tree grapple over the Hydra Clip, as shown below. The rear mounts should saddle over the upper skid steer latching bar. Take a measurement from each side of the mount to the edge of the tree shear mount to; ensure that it is installed in the center of the tree shear. This is very important to the efficiency of the tree grapple. Visually inspect the Tree Grapple after it is in position to see if it is vertically square with the tree shear.



Step 2

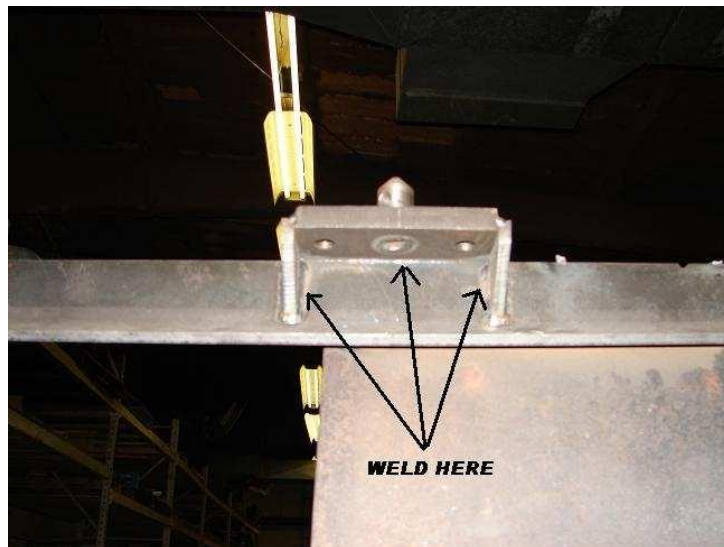
Weld the tree grapple mounts to the Hydra Clip. There are 4 mounts that must be welded completely around to ensure proper installation. We recommend at least a 250 amp welder with at least 0.035 wire. However, a stick machine using the proper rod will work as well. The pictures below show the welds. It is very important that these welds are large enough to ensure proper penetration. At least a 3/8" fillet weld is recommended. **NOTE: ONLY WELD THE LOWER PLATES ON THE GRAPPLE MOUNTS TO THE TREE SHEAR.**



Weld completely around the outside of the lower mount above (shown above)



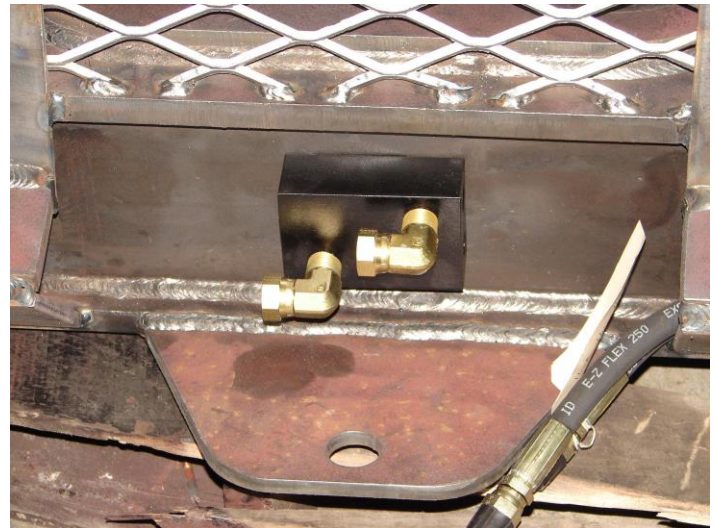
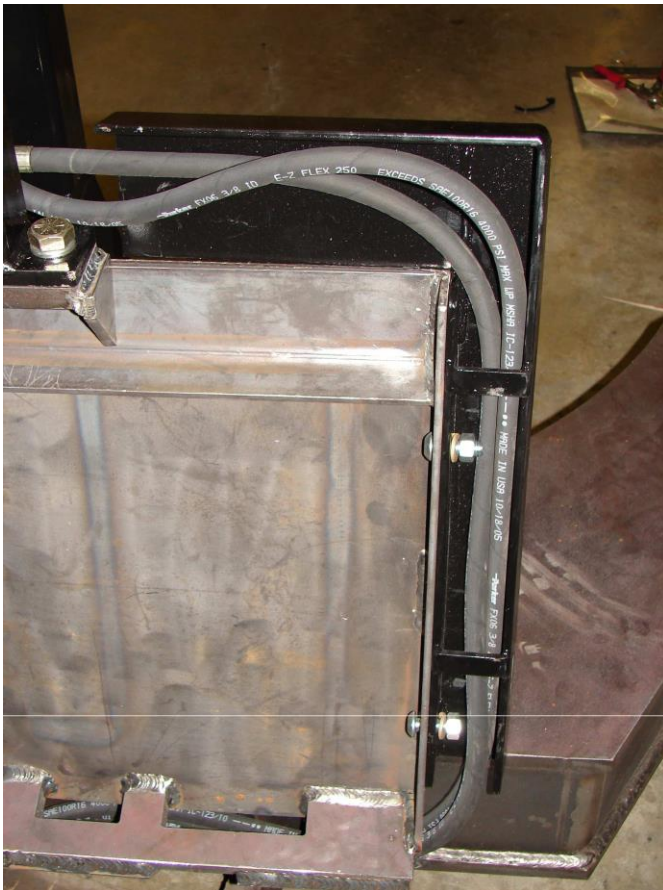
This mount must be welded top and bottom. (shown and below)



Allow the welds to completely cool before continuing the installation.

Step 3

The hydraulic hose bracket (supplied) will attach to the right hand side of the tree shear (when sitting in the skid steer) as shown below. Use the supplied bolts to attach to the existing holes. If the holes do not line up or do not exist, then drill with a 1/2" bit to ream or drill the holes. Use the supplied 1/2" grade 5 carriage bolts to attach the hose guard. Route the hydraulic hoses through the hose guard and underneath of the lower latch bracket to the hydraulic distribution block. The factory 90 degree fittings in the distribution block will be replaced with the supplied 1/2" Tee fitting. Connect the hose with the attached tag to the bottom Tee fitting. **Use extreme caution when disconnecting the hydraulic hoses from the 90 degree fittings. There may be very high pressure built up in the system and the hydraulic oil may be very hot. Unscrew the fittings very slowly to allow the fluid to leak out around the fitting until it stops. NEVER disconnect hydraulic hose connections while the fluid is hot. Allow the tree shear to cool down for 4 hours before taking any hydraulic connections loose. See pictures below.**



Remove factory 90 degree fitting (shown above)



Install Tee Fittings and Grapple Hoses (shown above)

Your new Tree Grapple is now installed and ready to use. There is a hydraulic pressure valve on the tree grapple which allows the force of the grapple arms to be adjusted. Read your Hydra Clip with Tree Grapple owner's manual completely before attempting to operate this tree grapple. If you have any questions during this installation or anytime while running please call Weber Manufacturing, LLC at 620-251-8500 or email us at info@treeshear.com.



