



Owner's Manual
Hydra Nip 8" Tree Shear



1300 East 3rd Street, Coffeyville Kansas 67337
Phone: (620) 251-8500
www.treeshear.com

Table of Contents

Cover Page.....	1
Blank.....	2
Table of Contents.....	3
Serial Number Information.....	4
Introduction.....	5
Safety Instructions.....	6-7
Operating Instructions.....	8
General Specifications/Lubricating Instructions.....	9
Hydra Nip Parts Diagram.....	10
Hydra Nip Hydraulic Rotary Mount Parts Diagram.....	11
Blade Adjustment.....	12
Bolt Maintenance Schedule.....	13
Blade Reconditioning.....	14
Hydraulic Rotate Information.....	15
Warranty.....	16-17

Serial Number Information

Please take time to record the serial number(s), dealer name and date purchased. The serial number(s) are stamped into a serial number tag welded to the hitch plate of the shear. The number will be similar to this example. *HN8A25100*

Serial Number _____

Dealer Name _____

Date Purchased _____

Introduction

Congratulations on purchasing the very best engineered and manufactured tree shear on the market today. The Hydra-Nip is 2 tools in one. It will trim trees as well as flush-cut 8" diameter trees. This owner's manual will outline the basic function and use of this tool in detail.

Weber Manufacturing has a continuous improvement policy. Model specifications, designs or prices are subject to change. All data given in this book is subject to production variations. Dimensions and weights are approximate and the illustrations do not necessarily represent equipment accurately. For exact information about any particular model of tree shear, consult your local dealer.

The following instructions will answer most of your questions regarding the M&M Hydra-Nip tree shear. If you have any additional questions, please call your local dealer or Weber Manufacturing at 620-251-8500

Safety Instructions

Read and understand the following instructions before operating the tree shear.

Because improper use of this equipment may result in severe injury to persons or property, it is important that correct procedures are followed and common sense is exercised.

Inspections of the hydraulic system should be made on a regular basis upon installation of the machine. Safety instructions specified in this manual should be followed to assure safe use.

1. This unit is a precision piece of power equipment, therefore exercise extreme caution at all times.
2. Know the controls and how to stop the machine quickly.
3. Trimming trees, especially large branches high overhead, requires absolute attention. Take a moment on each and every tree to study how the tree limb will fall. The direction the wind is blowing and what way the tree limb would naturally fall is very important.
4. Never cut a tree limb or tree that is leaning towards the operator or machine.
5. Never cut a tree limb or tree that is leaning in such a way that it might fall on the machine or tip the machine over.
6. Never cut or trim trees that are in direct contact with power lines or trees that may fall into power lines.
7. Never cut tree limbs or trees that are on a grade too steep for you to safely operate your machine. Always reduce speeds on steeper grades.
8. Inspect hoses for bare spots or cuts and replace if found. Hot hydraulic oil can cause serious injury.
9. To prevent serious injury, never close the tree shear blades on or close to someone.

Continued on next page

10. Do not allow children to operate this machine. Do not allow adults to operate this machine without proper instruction.
11. To maintain control of the unit and reduce the possibility of upset of the skid loader or damage to tree shear, operate the machine smoothly avoiding erratic operation and excessive speed.
12. Keep the area of operation at least 75 feet away from all persons and animals.

Operating Instructions

The following instructions are general guidelines for operating your new Hydra-Nip tree shear. These guidelines should be followed closely to maximize the life of the tree shear. Failure to follow these guidelines can void the manufacturer's warranty as well as cause severe machine damage or personal injury.

1. This hydraulic tree shear can be powered from any hydraulic source such as a tractor, skid loader, tele-handler, etc.
2. The tree shear is rated at a recommended hydraulic capacity of 3250 PSI input pressure, but will operate at lower pressures. Expect lower performance with lower pressures. Hydraulic fluid power comes from hydraulic pressure so more pressure in equals more power out.
3. After properly connecting the tree shear to a power source, cycle the tree shear through its full range of motion slowly the first time to insure that hydraulic hoses do not bind or pinch.
4. Videos are available at www.treeshear.com showing all of the intended uses for this tool as well as proper cutting techniques.
5. It is very important when trimming limbs or cutting trees to keep the cutting edge perpendicular to the wood that is being cut. Cutting at improper angles will cause the blade and pusher block to deflect and can cause severe blade damage.

General Specifications

Total Weight	550 lbs
Total Width	45.5"
Total Height	20.5"
Total Length	78.25"
Blade Length	11.25"
Blade Width	8.5"
Cutting Capacity*	8.0"
Frame Thickness	1/2" Alloy steel
Blade Material	3/4" AR-400
Shear Cylinder Dia x Stroke	4" x 5.5" Welded
Rotate Cylinder Dia x Stroke	2.5" x 6" Welded
Supply Pressure Line	1/2" x 68"
Supply Return Line	1/2" x 68"

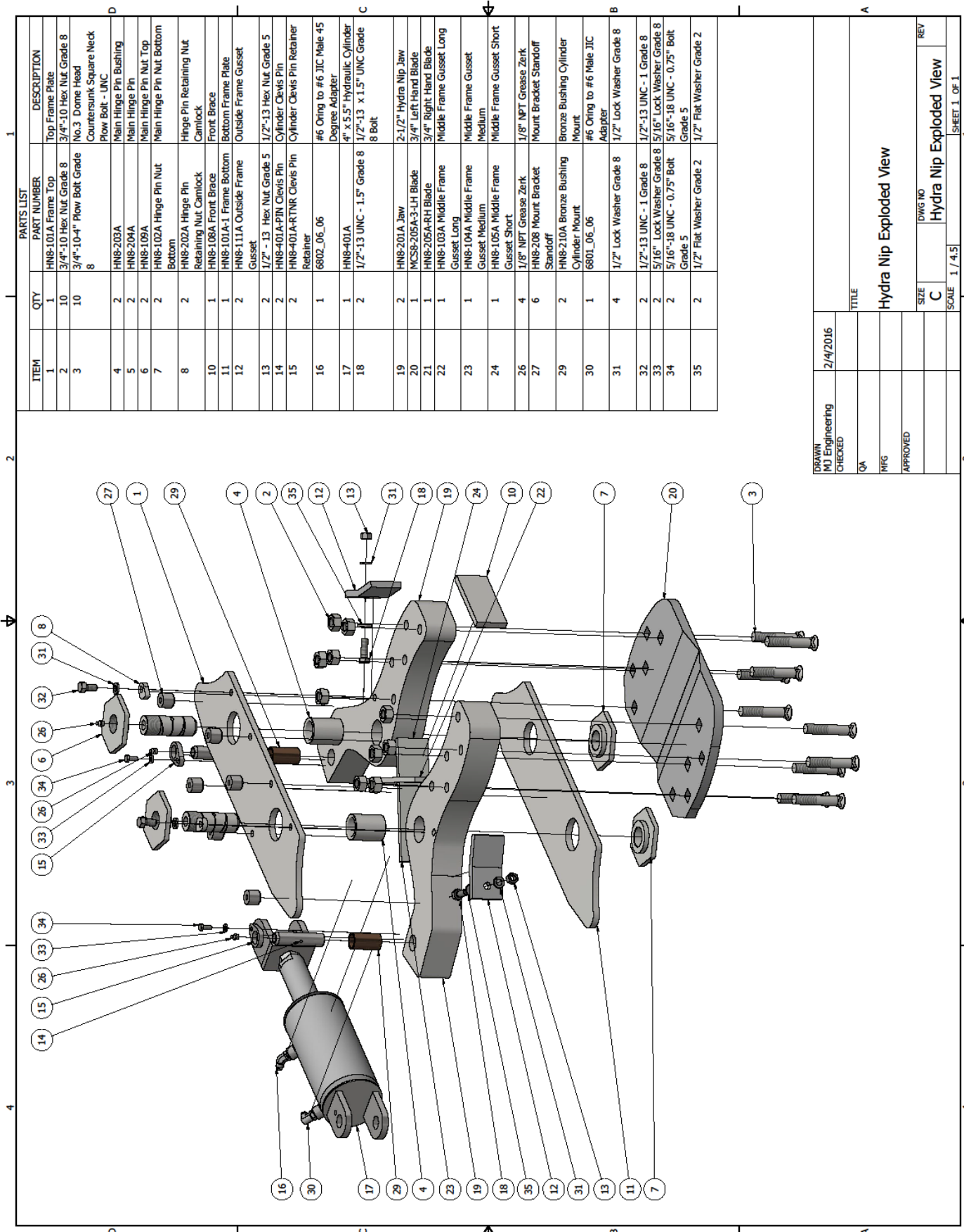
***Cutting capacity is rated in cross cutting and depends on hardness and size of wood**

Lubricating Instructions

There are six (6) grease fittings on the tree shear. They are located on the main hinge pins, shear cylinder and rotate cylinder pivot points.

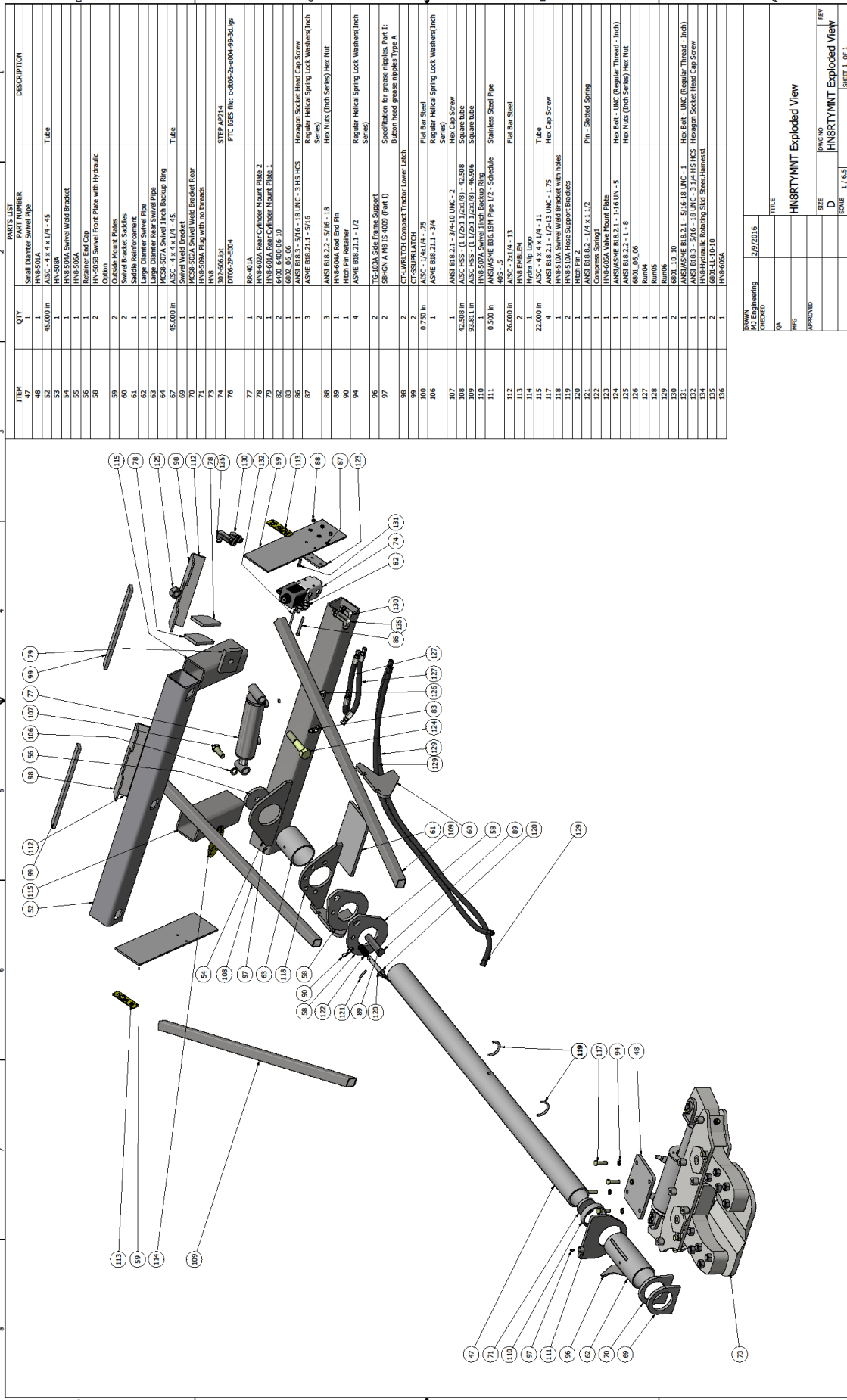
These fittings should be greased every three to four hours of operation. Grease these fittings until grease can be seen exiting around the pivot points. This will ensure grease has completely covered the main hinge pins resulting in longer machine life

NOTE: Failure to properly lubricate the tree shear as recommended will result in voiding the manufacturer warranty.



PARTS LIST			
ITEM	QTY	PART NUMBER	DESCRIPTION
1	1	HNS-101A Frame Top	Top Frame Plate
2	10	3/4"-10 Hex Nut Grade 8	3/4"-10 Hex Nut Grade 8
3	10	3/4"-10-4" Plow Bolt Grade 8	No.3 Dome Head Countersunk Square Neck Plow Bolt - UNC
4	2	HNS-203A	Main Hinge Pin Bushing
5	2	HNS-204A	Main Hinge Pin
6	2	HNS-109A	Main Hinge Pin Nut Top
7	2	HNS-102A Hinge Pin Nut Bottom	Main Hinge Pin Nut Bottom
8	2	HNS-202A Hinge Pin Retaining Nut Camlock	Hinge Pin Retaining Nut Camlock
10	1	HNS-108A Front Brace	Front Brace
11	1	HNS-101A-1 Frame Bottom	Bottom Frame Plate
12	2	HNS-111A Outside Frame Gusset	Outside Frame Gusset
13	2	1/2" - 13 Hex Nut Grade 5	1/2"-13 Hex Nut Grade 5
14	2	HNS-401A-PIN Clevis Pin	Clevis Pin
15	2	HNS-401A-RTNR Clevis Pin Retainer	Clevis Pin Retainer
16	1	6802_06_06	#6 O-ring to #6 JIC Male 45 Degree Adapter
17	1	HNS-401A	4" x 5.5" Hydraulic Cylinder
18	2	1/2"-13 UNC - 1.5" Grade 8	1/2"-13 x 1.5" UNC Grade 8 Bolt
19	2	HNS-201A Jaw	2-1/2" Hydra Nip Jaw
20	1	MCS8-205A-3-LH Blade	3/4" Left Hand Blade
21	1	HNS-205A-RH Blade	3/4" Right Hand Blade
22	1	HNS-103A Middle Frame Gusset Long	Middle Frame Gusset Long
23	1	HNS-104A Middle Frame Gusset Medium	Middle Frame Gusset Medium
24	1	HNS-105A Middle Frame Gusset Short	Middle Frame Gusset Short
26	4	1/8" NPT Grease Zerk	1/8" NPT Grease Zerk
27	6	HNS-208 Mount Bracket Standoff	Mount Bracket Standoff
29	2	HNS-210A Bronze Bushing Cylinder Mount	Bronze Bushing Cylinder Mount
30	1	6801_06_06	#6 O-ring to #6 Male JIC Adapter
31	4	1/2" Lock Washer Grade 8	1/2" Lock Washer Grade 8
32	2	1/2"-13 UNC - 1 Grade 8	1/2"-13 UNC - 1 Grade 8
33	2	5/16" Lock Washer Grade 8	5/16" Lock Washer Grade 8
34	2	5/16"-18 UNC - 0.75" Bolt Grade 5	5/16"-18 UNC - 0.75" Bolt Grade 5
35	2	1/2" Flat Washer Grade 2	1/2" Flat Washer Grade 2

DRAWN	MJ Engineering	2/4/2016	TITLE	Hydra Nip Exploded View
CHECKED	QA		SIZE	C
	MFG		DWG NO	Hydra Nip Exploded View
	APPROVED		SCALE	1 / 4.5
				SHEET 1 OF 1



ITEM	QTY	PART NUMBER	DESCRIPTION
47	1	Steel Flange Weld Neck Pipe	
48	1	HNB-501A	
52	45,000 in	ASC - 4 x 4 x 1/4 - 45	Tube
53	1	HNB-501A	
54	1	HNB-501A Swired Weld Bracket	
55	1	Hex Cap Screw	
56	1	Hex Nut	
57	1	Hex Pin	
58	2	HNB-502B Swired Front Flange with Hydraulic	
59	2	Outside Mount Flanges	
60	1	Socket Bolt	
61	1	Socket Bolts	
62	1	Large Diameter Swired Pipe	
63	1	Large Diameter Rear Swired Pipe	
64	1	HCS-507A Swired Linch Backup Ring	
65	45,000 in	ASC - 4 x 4 x 1/4 - 45	Tube
69	1	Swired Weld Bracket	
70	1	HCS-502A Swired Weld Bracket Rear	
71	1	HNB-509A Plug with no threads	
72	1	HNB-606-06	
73	1	HNB-606-06	
74	1	DT106-2P-ED04	STEP 4P71.4 PTC ISES Inc. C4006-24-004-993-01.9P
77	1	RR-401A	
78	2	HNB-602A Rear Cylinder Mount Flange 2	
79	2	HNB-602A Rear Cylinder Mount Flange 1	
82	2	6400 6400206-10	
83	1	6802 06 06	
86	1	ANSI B18.3 - 5/16 - 18 UNC - 3 HCS	Hexagon Socket Head Cap Screw
87	3	ANSE B18.2.1 - 5/16	Regular Helical Spring Lock Washers(Inch Series)
88	3	ANSE B18.2.2 - 5/16 - 18	Hex Nuts (Inch Series) Hex Nut
89	1	HNB-604A Rod End Pin	
90	1	HNB-604A Rod End Pin	
94	4	ANSE B18.2.1.1 - 1/2	Regular Helical Spring Lock Washers(Inch Series)
96	2	SHRIGN A 18 IS-4009 (Part 1)	Specification for grease nipples. Part 1: Button head grease nipples Type A
97	2	SHRIGN A 18 IS-4009 (Part 1)	
98	2	CT-100350 Compact Tractor Lower Latch	
99	2	CT-SSUBRATCH	
100	0.750 in	ASC - 1/4x1/4 - 7/8	Flat Bar Steel
106	1	ASC - 1/4x1/4 - 7/8	Regular Helical Spring Lock Washers(Inch Series)
107	1	ANSE B18.2.1 - 3/4x1.0 UNC - 3	Hex Cap Screw
108	42,500 in	ASC HSS - (1.1/2x1.1/2x1.0) - 42,500	Square Tube
109	93.811 in	ASC HSS - (1.1/2x1.1/2x1.0) - 46,906	Square Tube
110	1	HNB-507A Swired Linch Backup Ring	
111	0.500 in	ANSI/ASME B18.19M Pipe 1/2 - Schedule 40	Stainless Steel Pipe
112	26,000 in	ASC - 2x1/4 - 13	Flat Bar Steel
113	2	HNB EMBLEM	
114	1	Hydra Hip Logo	
115	22,000 in	ASC - 4 x 4 x 1/4 - 11	Tube
116	1	ANSE B18.2.1 - 1/2 x 1.0 UNC - 1.25	Hex Cap Screw
118	1	HNB-510A Swired Weld Bracket with holes	
119	2	HNB-510A Hoses Support Brackets	
120	1	HNB Pin 2	Pin - Slotted Spring
121	1	ANSE B18.2.2 - 1/4 x 1.1/2	Hex Bolt - UNC (Regular Thread - Inch)
122	1	HNB-605A Valve Mount Flange	Hex Nuts (Inch Series) Hex Nut
123	1	HNB-605A Valve Mount Flange	
124	1	ANSI/ASME B18.2.1 - 1-1/8 UNF - 5	Hex Bolt - UNC (Regular Thread - Inch)
125	1	ANSE B18.2.1 - 5/16-18 UNC - 1	Hex Bolt - UNC (Regular Thread - Inch)
126	1	6801 06 06	Hexagon Socket Head Cap Screw
127	1	6801 06 06	Hexagon Socket Head Cap Screw
128	1	Run005	HNB Hydraulic Boreing SHL Steel/Harness
129	1	Run006	
130	1	6801 10 10	Hex Bolt - UNC (Regular Thread - Inch)
131	1	ANSI/ASME B18.2.1 - 5/16-18 UNC - 1	Hex Bolt - UNC (Regular Thread - Inch)
132	1	ANSE B18.2.1 - 5/16-18 UNC - 1	Hex Bolt - UNC (Regular Thread - Inch)
134	1	HNB Hydraulic Boreing SHL Steel/Harness	
135	2	6801-LL-10-10	Hexagon Socket Head Cap Screw
136	2	HNB-606A	

DRAWN	2/2/2016	TITLE	
CHECKED			
QA			
PHG			
APPROVED			
DRAWING NO.		HNBRTYMNT Exploded View	
SIZE		D	
SCALE		1/4S	
REV		1 OF 1	

Blade Adjustment

Instructions for adjusting the blades when normal wear has created gap between the blades.

1. Close the tree shear fully and turn off the skid loader or tractor. Do NOT bleed off the residual hydraulic pressure in the system. This will cause the hydraulic cylinder to "relax" creating an inaccurate adjustment of the tree shear blades.
2. The rod end of the hydraulic cylinder has an adjustable threaded clevis that can be unscrewed to extend the length of the hydraulic cylinder. Loosen the jamb nut between the cylinder clevis and cylinder shaft using the 1.5" wrench provided. Using the 1.625" wrench provided turn the cylinder shaft until the blade gap has diminished
3. Retighten the jamb nut fully.
4. There are jaw stops (1/2" bolt and washers) located on the outside of the main frame on the tree shear. These stops are there to keep the tree shear cutting on center. If the jaws both make contact with the jaw stops, remove one (1) washer at a time until only one jaw makes contact with the jaw stops. If the jaw stops are not adjusted properly, the blades will not be aligned at the tip.
5. Double check the adjustment after completing the process. The correct adjustment will result in the blades touching each other but not over-biting. Double check the jaw stops to ensure only one jaw is touching a jaw stop when the shear is closed.

NOTE: If the hydraulic cylinder is adjusted so that the blades can push excessively on each other, this will cause severe damage to the blades as well as the tree shear frame.

Bolt Maintenance Schedule

All tree shears run under tremendous pressure and cause great strain on the retaining bolts. Bolts will require periodic tightening to maintain the machine. During the first few hours of operation the tree shears bolts will have a break-in period. All bolts should be checked periodically during this time as some stretching may occur resulting in loose bolts. After one hour of running time, the trees shears bolts must be re-torqued to the following specifications.

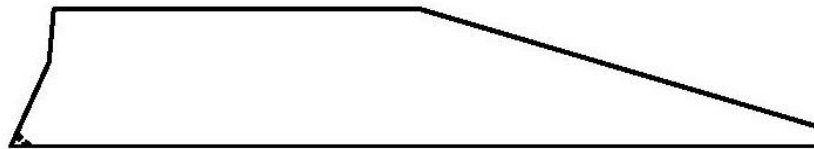
Blade Bolts	280 ft/lbs

Note: It is normal for some loosening of the bolts to occur as the machine goes through the break-in period. It is important to check all bolts several times during the first few hours of operation.

Blade Reconditioning

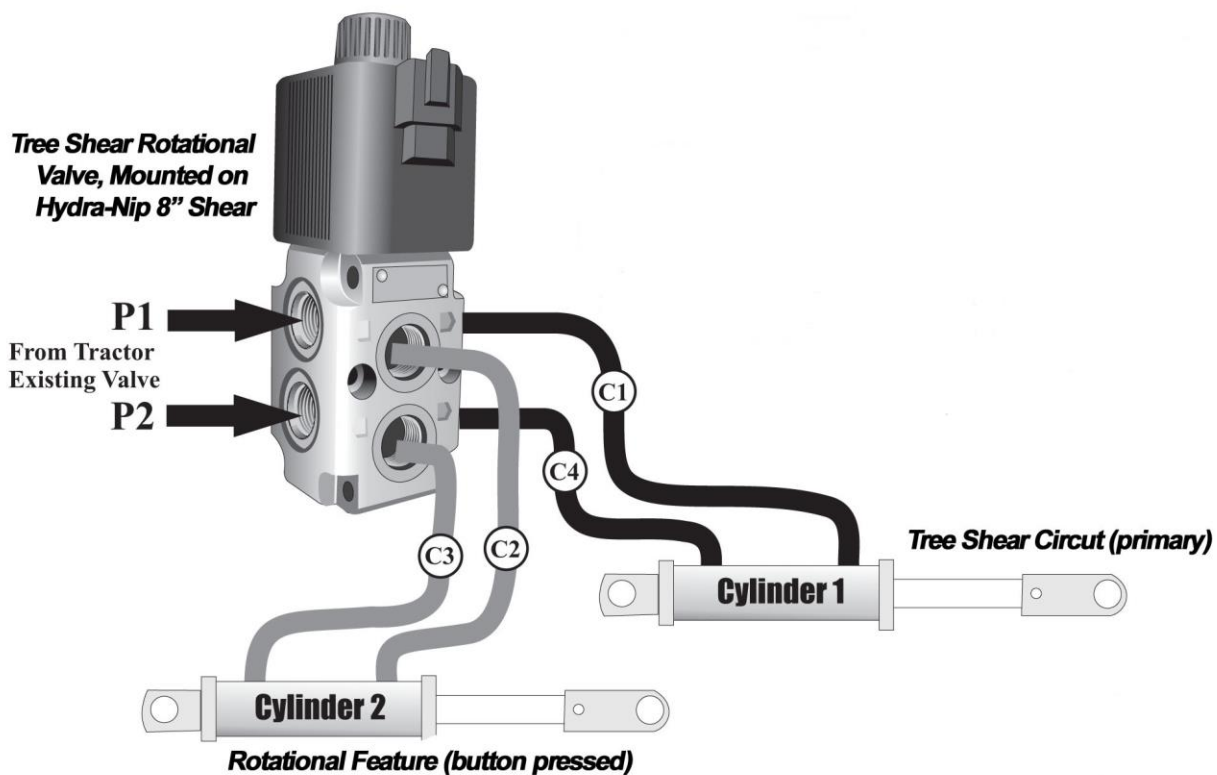
If the blade should become worn, it can be adjusted or reconditioned (see blade adjustment section). Maintaining the factory angle is very important to the efficiency of the tree shear. Any chips or gouges in the metal can be arc welded or wire welded with any 70,000-lb. tensile strength rod or wire.

Full Scale Drawing- Transfer Template to Cardboard for Reconditioning of Blades



Hydraulic Rotate Information

The Hydra Nip hydraulic rotate must be wired to a 12 volt switched source in order to be able to rotate the shear for side trimming. It needs a minimum of a 5 amp circuit. Available from Weber Manufacturing are skid loader adapters. Below is a diagram showing how the hydraulic rotate feature works.





LIMITED WARRANTY AND TERMS OF SALE

WARRANTY: WEBER MANUFACTURING, LLC products are warranted to the original retail purchaser against defects in material and workmanship which occur within twelve (12) months from the date of delivery to the purchase, or the date of delivery to the carrier in the case of F.O.B. shipments. WEBER MANUFACTURING, LLC's warranty shall be limited, at WEBER MANUFACTURING, LLC's option, to repair or replace any defective parts or components. Such repair or replacement shall be the purchaser's sole and exclusive remedy hereunder. Expendable components are excluded from this warranty. Normal wear and tear, along with routine maintenance, is always excluded from this warranty. Purchaser shall pay all transportation costs associated with request for warranty service, including costs and expenses of transporting the product or component part to WEBER MANUFACTURING, LLC service centers. Warranty service shall be performed by the WEBER MANUFACTURING, LLC dealer from whom the product was purchased, in the dealer's service department, during regularly scheduled hours of operation.

WARRANTY VOIDED BY MODIFICATION, ALTERATION OR MISUSE: This warranty is void if [1] the product is modified or altered in any way not approved in advance and in writing by WEBER MANUFACTURING, LLC, [2] if other than genuine WEBER MANUFACTURING, LLC parts have been installed, or [3] the product or its components have been subjected to misuse, neglect, accident, damage, improper maintenance, or improper operation.

LIABILITY LIMIT: WEBER MANUFACTURING, LLC shall not be liable in contract, tort, or otherwise, for any special, indirect, incidental or consequential damages, such as, but not limited to, loss of profits, loss of production, or from injury or damage caused by reason of the installation, modification, use, repair, maintenance, diagnostics, or mechanical failure of a WEBER MANUFACTURING, LLC product. WEBER MANUFACTURING, LLC shall not be liable for any cost incurred related to assessing, analyzing, or diagnosing to, or defect in, any product, regardless of whether it is a WEBER MANUFACTURING, LLC product or the product of another manufacturer, vendor or other third party. WEBER MANUFACTURING, LLC's warranties hereunder extend only to the direct customer of WEBER MANUFACTURING, LLC [or to the first user of the product if the direct customer purchases solely for the purpose of resale]. WEBER MANUFACTURING, LLC makes no warranties when the damage results from the failure to read, understand or follow all instructions in the operator's

manual(s) and the equipment warning decals. The purchaser, or user of any WEBER MANUFACTURING, LLC equipment shall be responsible for all ordinary maintenance, adjustments, and cleaning of the product. In the event that the WEBER MANUFACTURING, LLC product is not properly maintained, all warranties by WEBER MANUFACTURING, LLC are null and void. Certain component parts of WEBER MANUFACTURING, LLC products are purchased from other vendors. WEBER MANUFACTURING, LLC warrants these component parts only to the extent of the vendor's warranties. WEBER MANUFACTURING, LLC shall repair or replace such component parts in accordance with the vendor's warranty policy only if WEBER MANUFACTURING, LLC, in its sole discretion, determines such component parts to be defective.

ASSUMPTION OF RISK: Purchaser, and any subsequent user, assumes the risk of, and liability for, all loss, damage, or injury to persons or property caused by misuse of WEBER MANUFACTURING, LLC products. Misuse includes the failure to read, understand, or follow all instructions in the operator's manual(s) and the equipment warning decals.

WARRANTY DISCLAIMER: To the maximum extent permitted by applicable law, WEBER MANUFACTURING, LLC makes no warranties other than those stated herein, and these warranties are expressly in lieu of all other warranties, whether expressed or implied, including by way of example and not by way of limitation, any warranties of merchantability or fitness for a particular purpose, and also in lieu of any other obligations on the part of WEBER MANUFACTURING, LLC. During the period of the warranty, the exclusive remedy is repair or replacement of the product.

MODIFICATIONS: No representation or warranty, expressed or implied, made by any sales representative, or any agent or employee of WEBER MANUFACTURING, LLC which is not specifically set forth herein shall be binding on WEBER MANUFACTURING, LLC unless approved in writing by an authorized representative of WEBER MANUFACTURING, LLC.

TAXES: Unless otherwise noted, the price does not include any state or local, property, sales, use, or privilege tax or license. If any such charge shall be assessed because of, or in connections with, the transaction described herein, the purchaser agrees to pay the same or reimburse WEBER MANUFACTURING, LLC as the case may be.

LOSS OR DAMAGE IN TRANSIT: Any claim against WEBER MANUFACTURING, LLC for loss or damage to products in transit shall be handled as follows: Immediately upon delivery, purchaser must inspect product for damage. If damage is detected or suspected, purchaser must notify the carrier (by writing on the bill of lading – at the time of delivery) and must also notify WEBER MANUFACTURING, LLC within one [1] day of delivery (by phone call, email or letter) of any damage sustained to product. All RISK OF LOSS for damage in transit passes to purchaser upon acceptance of delivery, and any failure on the part of the purchaser to detect damage and/or failure to strictly adhere to the foregoing notification requirements shall constitute a waiver of claim and shall transfer all RISK OF LOSS to purchaser.

GENERAL PROVISION: The failure of WEBER MANUFACTURING, LLC to enforce any right will not be construed as waiver of WEBER MANUFACTURING, LLC's right to enforce performance in the future. The purchaser may not assign any rights or delegate any performance hereunder without the express written consent of WEBER MANUFACTURING, LLC.

CLAIM/NOTICE OF DEFECTS: In the event the purchaser claims that a WEBER MANUFACTURING, LLC product is defective, WEBER MANUFACTURING, LLC shall be given an equal opportunity for inspection, or, upon request, shall be furnished a sample of such product. Any claim must be made within thirty [30] days after receiving the product shipped hereunder, The purchaser shall set aside, protect, and hold such product without further processing until WEBER MANUFACTURING, LLC has an opportunity to inspect and advise the purchaser as to the disposition, if any, to be made of such product. In no event shall any WEBER MANUFACTURING, LLC product be returned, reworked, or scrapped by the purchaser without the express written authorization of WEBER MANUFACTURING, LLC.

PATENT RIGHTS: The purchaser agrees not to violate or infringe the patent rights relating to any WEBER MANUFACTURING, LLC product, or any other patent rights under the control of WEBER MANUFACTURING, LLC under which WEBER MANUFACTURING, LLC has the right to manufacture or sell. The purchaser also agrees not to contest WEBER MANUFACTURING, LLC's title to any and all such patent rights, nor the validity or scope thereof. The purchaser assumes liability for patent or copyright infringement when goods or products are made to the purchaser's specifications.

NON-INCORPORATION: Any terms consistent with those stated herein which may appear in the purchaser's formal order, or in any proposal for additional or different terms, or any attempts by the purchaser to vary in any degree, any of the terms of this offer, are hereby objected to and rejected, but such proposal shall not operate as a rejection of this offer unless such variances in the terms and the description, quantity, price or delivery schedule of the goods or products are deemed a material alteration hereof, in which event this offer shall be deemed accepted by the purchaser without said additional, or different terms.

GOVERNING LAW, JURISDICTION AND VENUE: All disputes arising out of this limited warranty and terms of sale shall be governed by the laws of the State of Kansas. The purchaser consents to the personal jurisdiction of federal and state courts in the State of Kansas, waives any argument that such a forum is not convenient, and agrees that any litigation relating to this limited warranty and terms of sale shall be held in District Court of Montgomery County, Kansas or the Federal District Court covering southeast Kansas.

SEVERABILITY: If for any reason any one or more provisions contained in this Limited Warranty and Terms of Sale are deemed to be invalid or unenforceable, the Agreement shall be construed as if it did not contain the invalid or unenforceable provision and the rights and obligations of the Parties shall be construed and enforced accordingly.